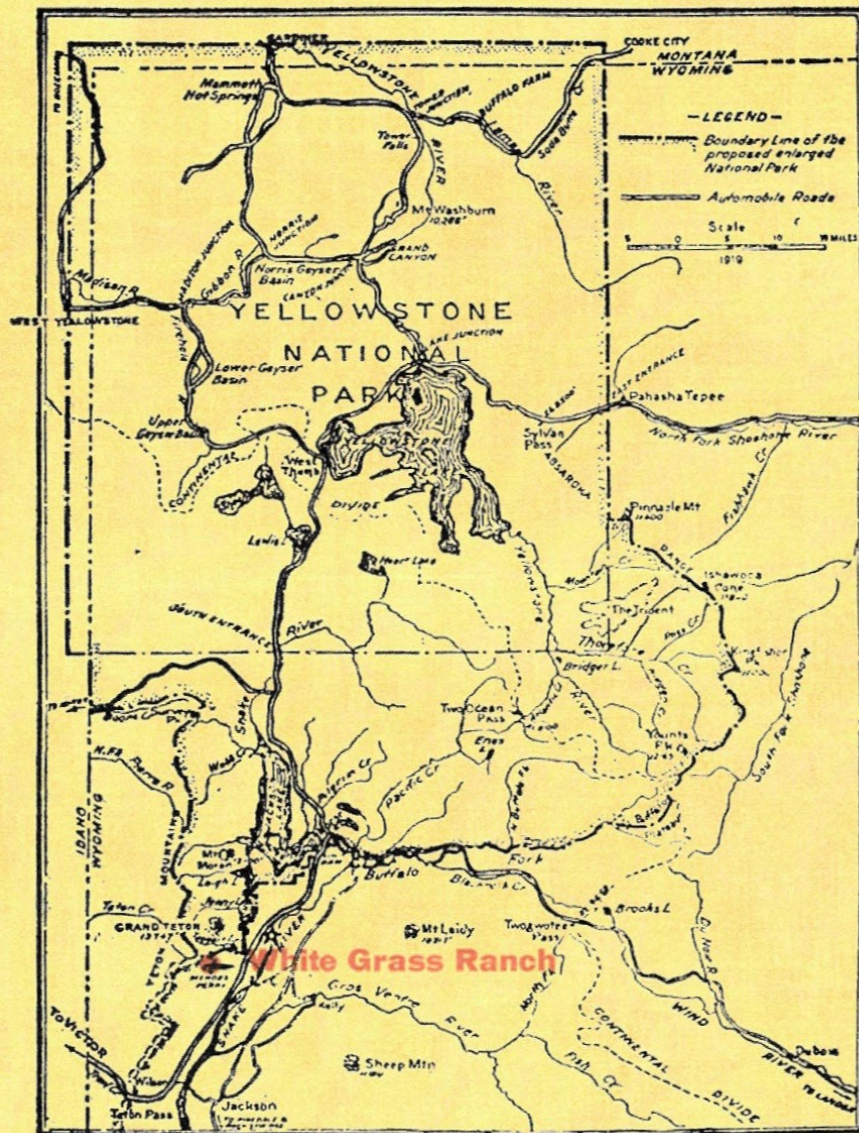


THE WHITE GRASS RANCH

H-B

For Boys



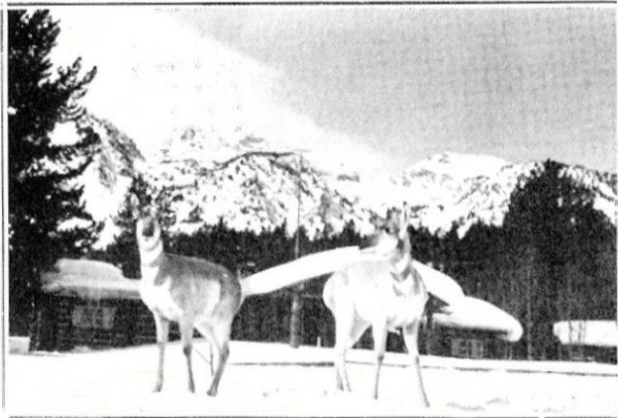
Map Showing Jackson Hole Country and Yellowstone National Park



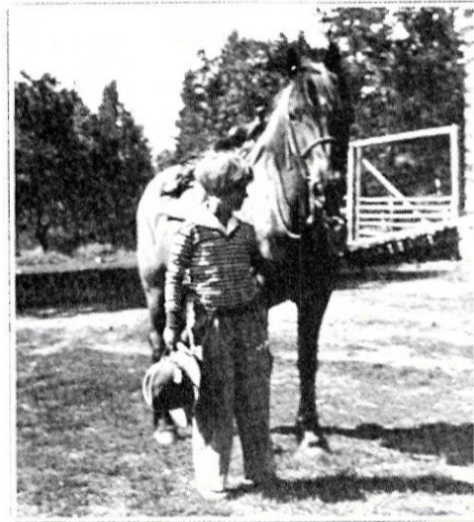
HERD OF BIG HORN RAMS



MOOSE ARE OFTEN SEEN



ANTELOPE ON RANCH



PALS



COME AND GET IT



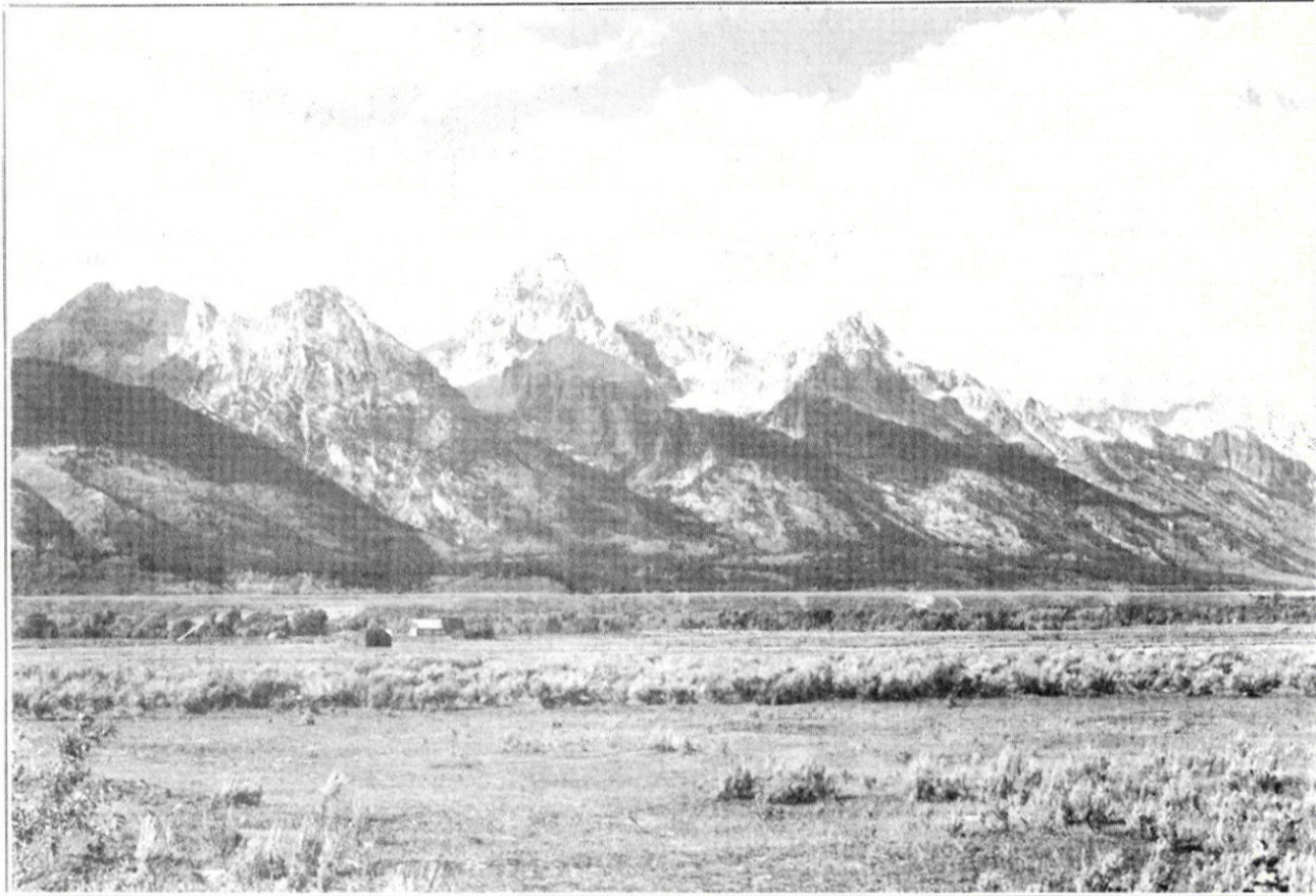
SHOEING A BAD ONE



CORRAL

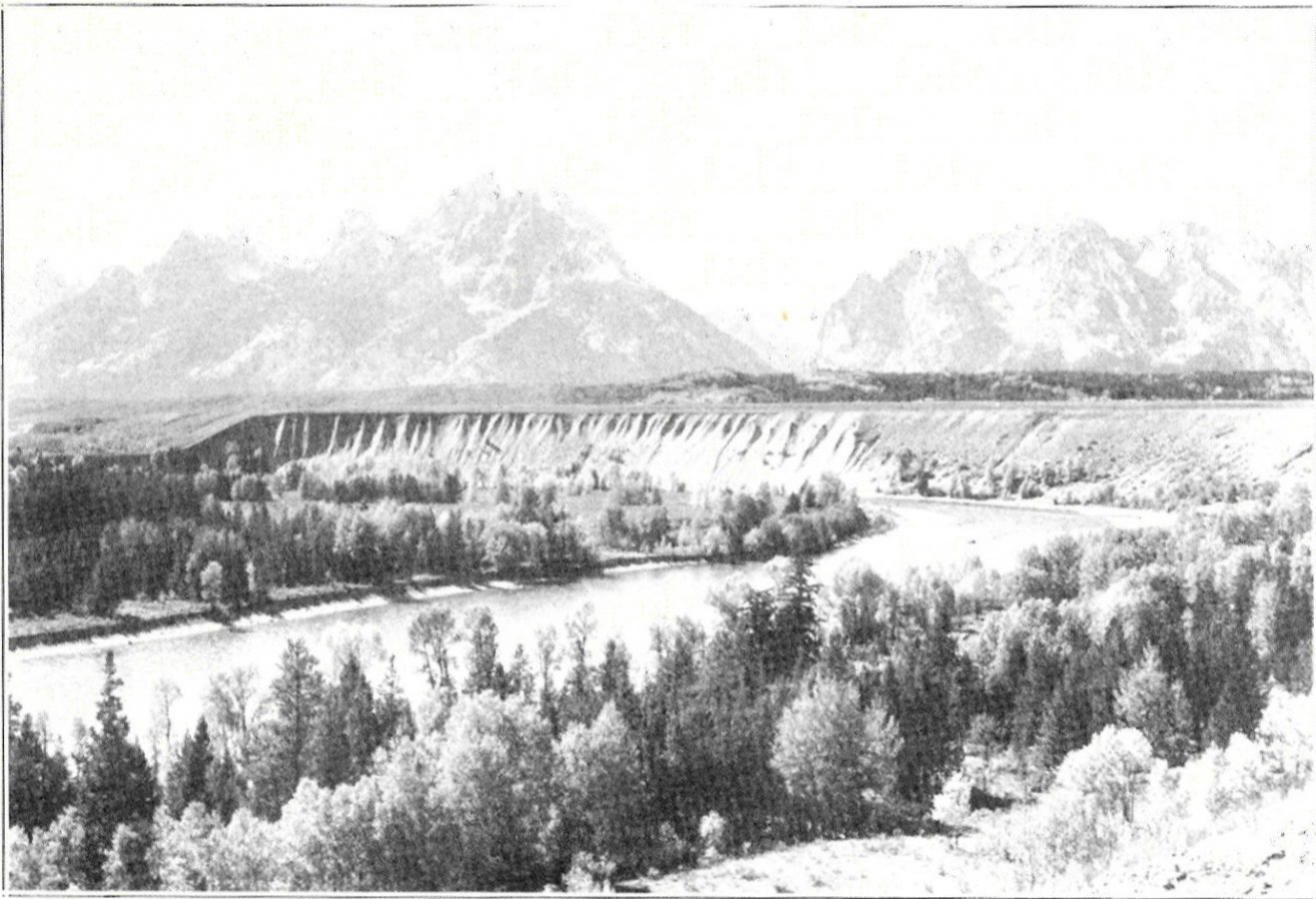


RELAXATION



THE TETONS

Courtesy National Park Service.

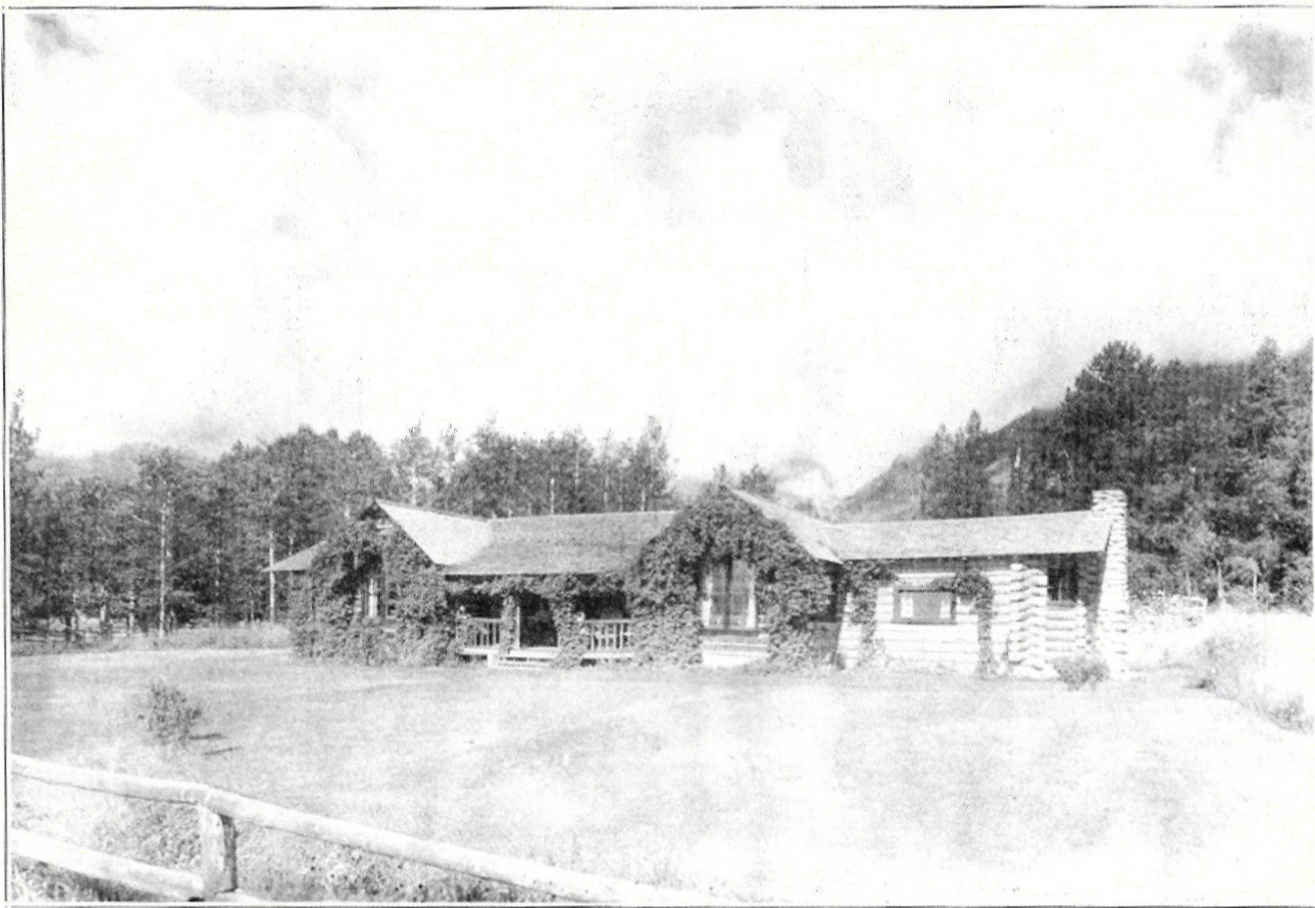


TETONS FROM DEAD MAN'S BAR

Courtesy National Park Service.



WHITE GRASS RANCH



MAIN CABIN — ELEVATION 6,753 FEET
White Grass Ranch, Moose, Jackson Hole, Wyoming



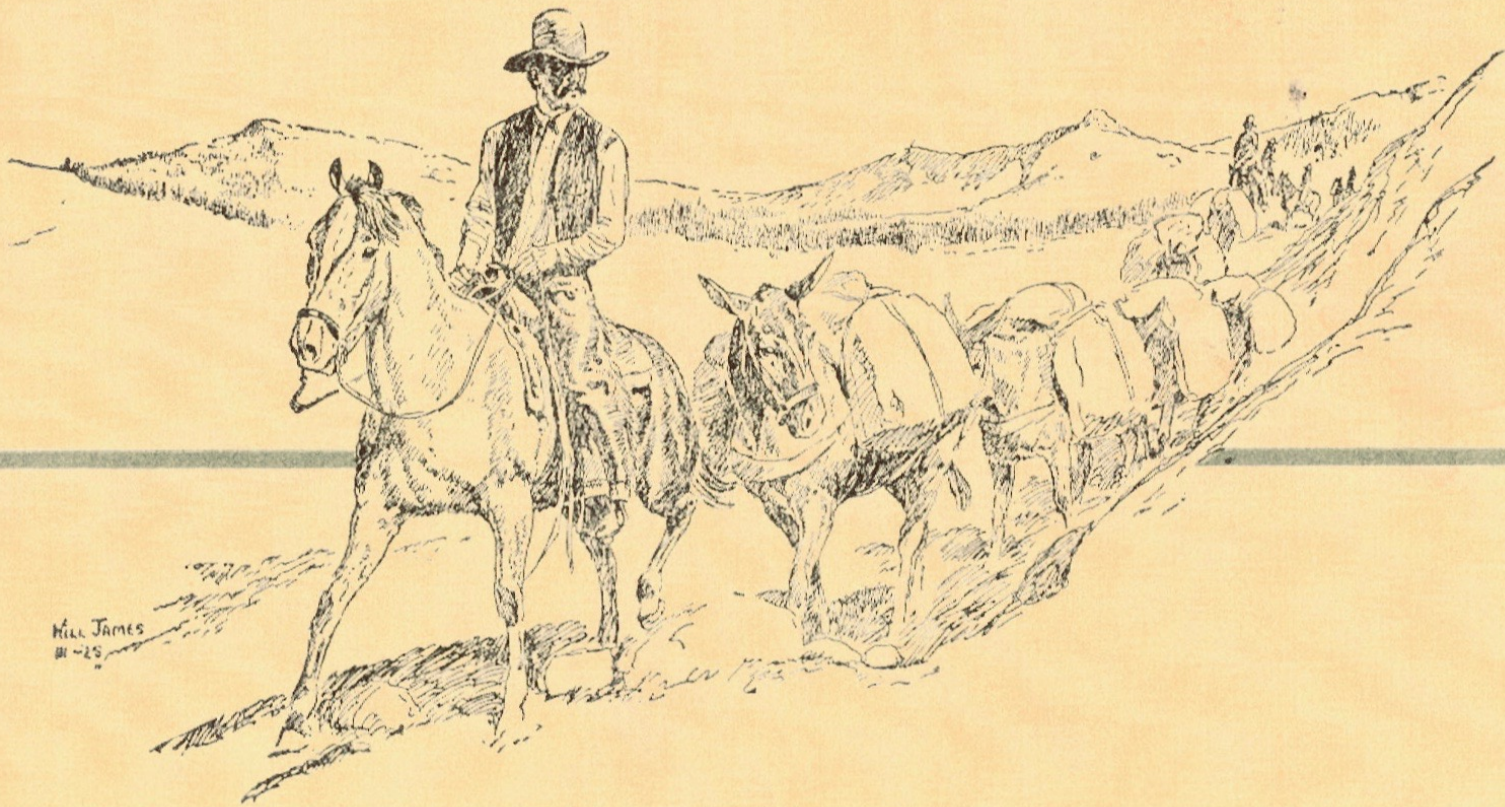
A TWO-ROOM CABIN

It is, perhaps, the unspoiled character of Jackson Hole, with the railroad still safely distant across the mountains, as well as the extraordinary variety of its scenery, which led Theodore Roosevelt, Owen Wister, and Henry van Dyke to speak of it as the most beautiful country in the United States. Dr. van Dyke calls the "pinnacle and spires of the Tetons and the buttressed bulk of Mount Moran, the most entrancing mountain view in our country."



CARD ROOM, WHITE GRASS RANCH

The ranch accommodates about 35 people, and therefore has a particular appeal to all who prefer a smaller group. Personal references are requested in making application for the first time. The sleeping quarters consist of one, two and three room cabins. These are placed at sufficient distance from each other to secure privacy.



Will James
11-25



Ives & Sons
Phila